

NASSCOM[®]
**ENGINEERING
& INNOVATION**
EXCELLENCE AWARDS **2021**

THE IMPACT MAKERS OF INDIAN ER&D

Winners of the first edition
of NASSCOM Engineering &
Innovation Excellence
Awards 2021

June 2021

KNOWLEDGE PARTNER



“

India has emerged as the hub for digital solutions across technology and ER&D



Debjani Ghosh
President, NASSCOM

Since the outbreak of the COVID-19 pandemic in 2020, India has shown to the world its resilience, determination, adaptability and empathy. The crisis has unveiled many unexpected heroes who rose to the challenge to help the country deal with this pandemic effectively.

I would like to express my heartfelt gratitude to all the COVID warriors and frontline workers and every individual who is helping the country get through such tough times.

The pandemic also accelerated digital adoption manifold and every business is building its roadmap to be digital first through partnerships and collaborations. India has emerged as the hub for digital solutions across technology and ER&D.

The Indian ER&D landscape is recognized globally for the ingenuity, innovation and collaboration of its constituents. The efforts of the ecosystem have propelled India as the destination of choice for global enterprises. Even when the pandemic was at its peak, the industry continued to drive impact and create value for its customers and parent organizations. The entire ER&D ecosystem stood united to assist and support their employees, community and the country in multitude of ways to deal with this pandemic.

I am proud to launch the inaugural edition of the **NASSCOM Engineering & Innovation Excellence Awards 2021**. Through these awards, we seek to celebrate and felicitate India's successes in the Engineering R&D space. These awards will provide a platform for Indian ER&D community to showcase its exceptional capabilities to the world. These awards will also serve as a testimony to the innovation, strength, adaptability, resiliency and indomitable spirit of the Indian Engineering R&D ecosystem.

Heartiest congratulations to all the winners for this spectacular achievement and sincere appreciation for their contribution to take Indian ER&D industry to new heights. And, special thanks to our knowledge partner FutureFactor360 and eminent jury members.

Awards Overview

Celebrating India's technical prowess, inspirational leadership and futuristic innovation

The first edition of NASSCOM ER&D Engineering & Innovation Excellence Awards 2021 seeks to recognize and honor the Stellar performances and the "Pioneers and Changemakers" of the Indian ER&D industry.



Futuristic Innovation

The awards recognize the ingenious & breakthrough solutions developed by the Indian ER&D industry



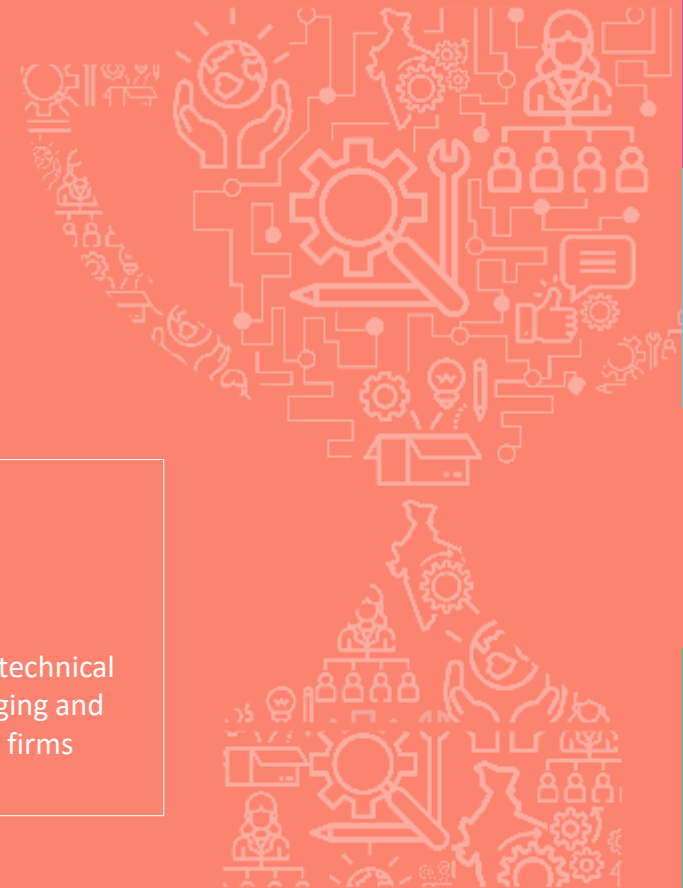
Inspirational Leadership

The awards honor innovative, disruptive and bold leaders who have spurred the continuous evolution and technological advancement of their enterprise



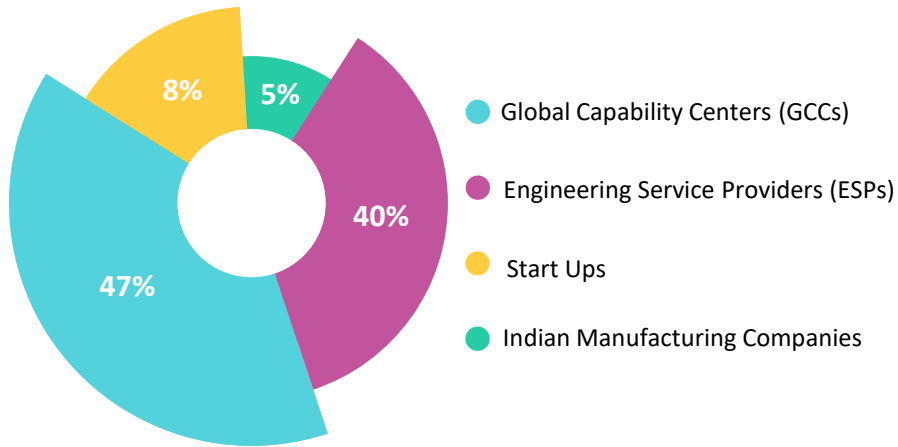
Technical Prowess

The awards recognize the technical capabilities of both emerging and well-established Indian firms

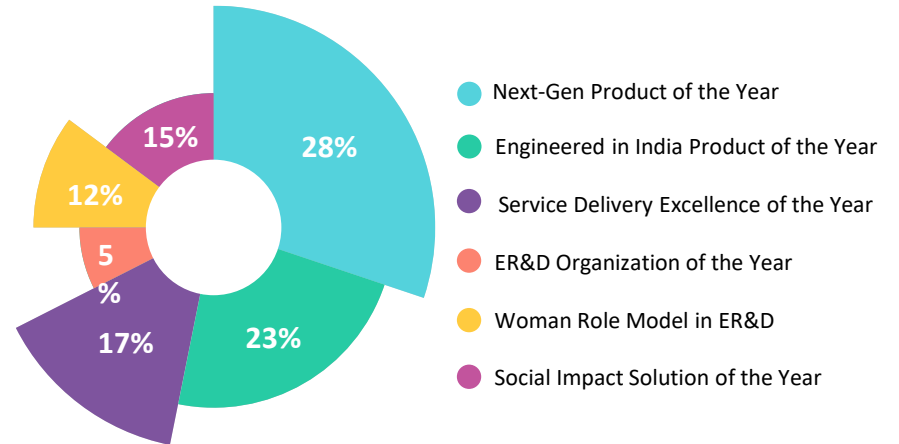


Key Highlights

Segment Wise Nominations Received



Award Category Wise Nominations Received



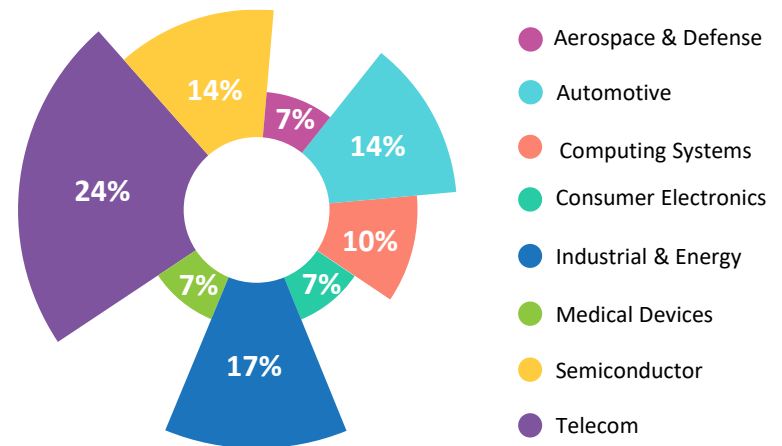
300+

Nominations Received

105+

Unique ER&D Organization Nominations

Industry Vertical Wise Nominations Received



Evaluation Methodology



Initial Validation

Applications were received from GCCs, ESPs, Start-ups and India based manufacturing companies for the NASSCOM Engineering & Innovation Excellence Awards 2021, based on a predefined questionnaire template

- The applications received for each award category were validated for eligibility by FutureFactor360 and NASSCOM against a set of predefined guidelines



First Jury Round

The eligible applications for each award category were evaluated by our eminent jury members

The applications were evaluated and rated across different key parameters based on a framework designed by NASSCOM and FutureFactor360



Final Jury Round

The shortlisted applicants were asked to present an elevator pitch to a panel of jury

The final winners of the NASSCOM Engineering & Innovation Excellence Awards 2021 were chosen based on the rigorous evaluation and ratings of the jury

Meet our Jury Members



Dr. BVR Mohan Reddy
Founder, Chairman & Board member
Cyient



Harish Mehta
Founder & Executive Chairman
Onward



Dr. Keshab Panda
Non-Executive Director on the Board
L&T Technology Services



Murugappan MM
Chairman,
Carborundum Universal



Naresh Shah
Former President, India R&D
Hewlett Packard Enterprise



Dr. Aloknath De
Corporate VP & CTO
Samsung R&D Institute India



Anand Singh
CEO, Advanced Communication Services
iLink Digital



Dr. Bala Bharadvaj
Aerospace Expert & former Boeing Executive



Bala Girisaballa
Managing Director
Vista Equity Partners



Dattatri Salagame
Managing Director
Robert Bosch Engineering & Business Solutions

Meet our Jury Members



Dileep Mangsuli
*Head, Development
Center*
Siemens
Healthineers



GH Rao
*President,
Engineering, R&D
Services (ERS)*
HCL



**Dr. Gopichand
Katragadda**
Founder & CEO
Myelin Foundry



K S Viswanathan
*VP, Industry
Initiatives*
NASSCOM



**Dr. Krishna
Mikkilineni**
General Partner
StartupXseed
Ventures LLP



Maneesh Sharma
Country Manager
GitHub



Manu Saale
*Managing Director &
CEO*
Mercedes-Benz Research
and Development India



Raghav Gulur
*SVP & Global Head,
IES*
Tech Mahindra



Ravi Arora
VP, Innovation
Tata Sons



Ravi Narayan
CEO
T-Hub

Meet our Jury Members



Regu Ayyaswamy
*Global Head - IoT,
Engineering &
Industrial Services*
TCS



Sangeeta Gupta
*SVP & Chief
Strategy Officer*
NASSCOM



Sarv Saravanan
*VP & Business Leader,
Modern Workplace
Solutions & Services*
Microsoft



Siddharth Pai
Founder
Siana Capital



Sindhu Gangadharan
*SVP & Managing
Director*
SAP Labs India



Dr. TSK Murthy
*Engineer &
Teacher*



AWARD

**CATEGORIES
ACROSS FOUR
SEGMENTS**

● Global Capability Centers

● Engineering Service Providers

● Start-ups

● Indian Manufacturing Companies

WINNERS

Meet the “Pioneers and Changemakers”

NEXT-GEN PRODUCT OF THE YEAR

Recognizing innovative products which leverage futuristic technologies to deliver customer value and impact

- *Global Capability Centers*
- *Engineering Service Providers*
- *Start-ups*



NEXT-GEN PRODUCT OF THE YEAR

Global Capability Centers



BOSCH

Bosch Hemoglobin Monitor

Bosch Hemoglobin Monitor is a patented, non-invasive, point-of-care solution powered with machine learning algorithms, designed to revolutionize the combat against the global burden of anemia. It enables rapid, painless and simple hemoglobin testing and delivers results within 30 seconds.



HEALTHCARE

NEXT-GEN PRODUCT OF THE YEAR

Global Capability Centers



NCS 1004 Multi-Haul Transponder

NCS 1004 is industry's first multi-haul coherent transponder. This transponder allows high-capacity fibre-optic transmission among data centers for metro, long-haul, and submarine applications and is easy to deploy and manage.



TELECOM

NEXT-GEN PRODUCT OF THE YEAR

Global Capability Centers



Catalyst IE3400 Rugged Series

Cisco Catalyst IE3400 is an Industry 4.0 ready rugged series switch. This switch provides advanced high-speed gigabit ethernet connectivity across industry verticals and can withstand harsh industrial environments.

NETWORK

NEXT-GEN PRODUCT OF THE YEAR

Global Capability Centers



AIROC™

Infineon's newly developed AIROC™ brand now includes the industry's first 1x1 Wi-Fi 6/6E and Bluetooth 5.2 combo SoC for the IoT, enterprise and industrial applications, and its first 2x2 Wi-Fi 6/6E and Bluetooth 5.2 combo SoC for multimedia, consumer and automotive applications.



TELECOM

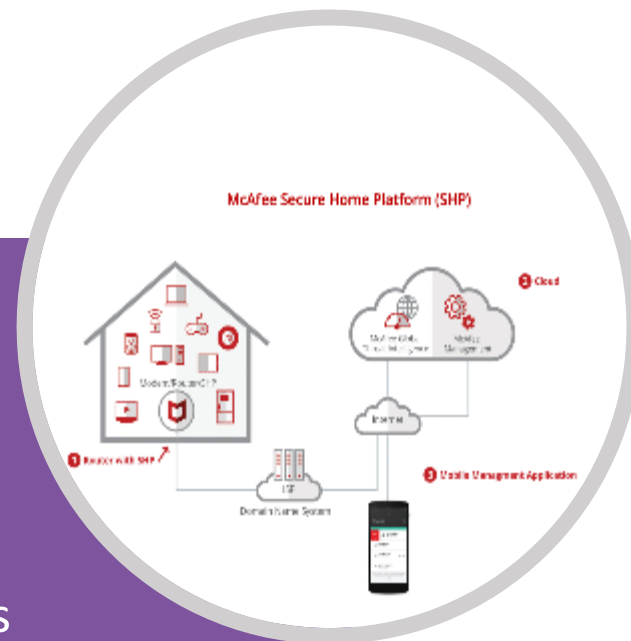
NEXT-GEN PRODUCT OF THE YEAR

Global Capability Centers



McAfee[®] Secure Home Platform

McAfee[®] Secure Home Platform (SHP) provides seamless home network security for everything – and everyone – on a home network. It is there to protect what matters most to consumers - their family and friends.



CONSUMER
ELECTRONICS

NEXT-GEN PRODUCT OF THE YEAR

Global Capability Centers



Wiper NT

Collins Smart Wiper NT is a reliable, safe, and cost-effective system for cleaning aircraft windshields. This system consists of a software-based controller to attain dynamic control on sweep angle, speed, and parking position. It also includes composite arms and blades to meet aerodynamic conditions.

AEROSPACE

NEXT-GEN PRODUCT OF THE YEAR

Global Capability Centers

PHILIPS

Compressed SENSE

Philips Compressed SENSE is a Magnetic Resonance Imaging Reconstruction (MRIR) solution. MRIR increases the productivity of the scanner by reducing the scan time and boosts the diagnostic confidence with an improvement in the image quality. It avoids the need for a re-scan and hence enhances the patient's comfort.



HEALTHCARE

NEXT-GEN PRODUCT OF THE YEAR

Engineering Service Providers



PowerStore

PowerStore is a midrange infrastructure platform developed to support traditional and modern computing workloads for enterprises.



COMPUTING
SYSTEMS

NEXT-GEN PRODUCT OF THE YEAR

Engineering Service Providers



5G NR RAN and ViNGC

5G NR RAN and 5G ViNGC frameworks enable OEMs and global telecom service providers to accelerate their field deployment of 5G. This product caters to eMBB (Enhanced Mobile Broadband), URLLC (Ultra Reliable Low Latency Communications), Automotive/V2X, mMTC (Massive Machine Type Communications) standards of 5G Technology.

TELECOM

NEXT-GEN PRODUCT OF THE YEAR

Engineering Service Providers



HARMAN Amplify

HARMAN Amplify is industry first AI powered Smart femto cell solution. It offers unique convergence of LTE Small Cell, Digital Voice AI, and IoT. It enables telcos to offer enhanced indoor LTE coverage, improved subscriber stickiness, while reducing their customer support costs.



ELECTRONICS
CONSUMER

NEXT-GEN PRODUCT OF THE YEAR

Engineering Service Providers



Infosys Smart Network Assurance

Infosys Smart Network Assurance (ISNA) is a Next Generation AI/ML based Closed Loop Assurance solution for enterprise and telecom networks. The solution uses Artificial Intelligence (AI) to proactively identify and self-heal network issues.



TELECOM

NEXT-GEN PRODUCT OF THE YEAR

Engineering Service Providers



Distributed Ledger DnD

Do Not Disturb is a blockchain based solution that protects telecom subscribers from spam calls and text messages. It is the largest blockchain implementation in the world impacting 1 billion+ mobile subscribers of India.

TELECOM

NEXT-GEN PRODUCT OF THE YEAR

Engineering Service Providers

TATA ELXSI

Connected Vehicle IoT Platform

Connected Vehicle Platform (CVP) from Tata Elxsi is a cloud-based IoT data platform that enables automotive customers to offer customer centric and digital enhanced features. The platform is deployed for more than 100,000 vehicles for an OEM customer providing enhanced comfort and convenience for end consumers.

The TETHER logo is displayed within a light gray circular graphic. The word "TETHER" is written in a bold, sans-serif font, with "TET" in blue and "HER" in orange. A dashed orange arc is positioned above the letters "H" and "E".

TETHER

AUTOMOTIVE

A network diagram consisting of a grid of gray dots connected by thin gray lines, representing a connected system or data network. The diagram is located in the bottom right corner of the slide, partially overlapping the purple background and the word "AUTOMOTIVE".

NEXT-GEN PRODUCT OF THE YEAR

Engineering Service Providers



Electric Vehicle Charging Station

Electric Vehicle Charging Station is an eMobility charging solution coupled with a mobile app for charging status and device control. The solution is robust, flexible, and reliable as per industry requirements.

AUTOMOTIVE

NEXT-GEN PRODUCT OF THE YEAR

Engineering Service Providers



Global Telematics Solution

Global Telematics Solution (GTS) is a cloud based IoT telematics product for lift trucks in the material handling industry. The solution delivers increased operational efficiency, productivity, and optimized maintenance costs through bi-directional communication between the platform and truck, real time data analytics, and advanced visualization.



INDUSTRIAL

NEXT-GEN PRODUCT OF THE YEAR

Start-ups



Minion Energy Management Solution

Minion Energy Management Solution helps businesses to reduce electricity costs and improve productivity up to 30 percent by providing real-time device-level electricity consumption insights without dedicated equipment level sensors/meters by leveraging Deep Learning and AI techniques to detect energy signatures at the EDGE at an affordable price point.



ENERGY

NEXT-GEN PRODUCT OF THE YEAR

Start-ups



Fasal

Fasal is a full-stack platform for progressive horticulture anchored on an AI-driven IoT-SaaS solution that provides farm-level, crop-specific, and crop-stage-specific actionable intelligence to improve profitability and sustainability.

AGRICULTURE

NEXT-GEN PRODUCT OF THE YEAR

Start-ups



Apollo

Apollo is a patented digital twin and IoT-based performance intelligence and health analytics solution for renewable energy plants. The solution generates closed-loop actionable insights which results in a 25 percent reduction in plant operations cost, 10 percent increment in yield, and 2 years additional life in the plant's assets.



ENERGY

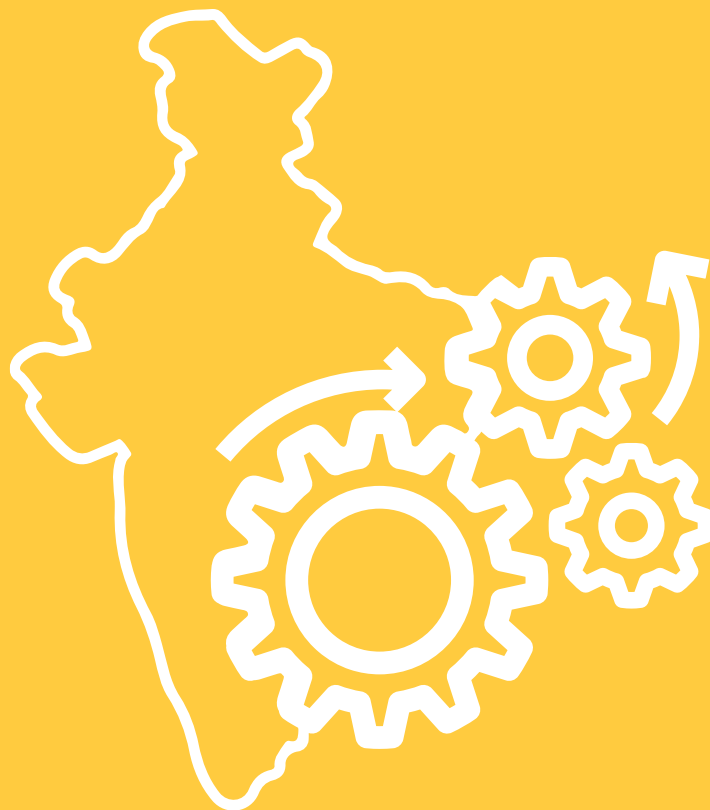
WINNERS

Meet the “Pioneers and Changemakers”

ENGINEERED IN INDIA PRODUCT OF THE YEAR

Recognizing products that are designed and developed entirely or mostly in India which have driven significant value to Global or Indian customers

- *Global Capability Centers*
- *Engineering Service Providers*
- *Indian Manufacturing Companies*



ENGINEERED-IN-INDIA PRODUCT OF THE YEAR

Global Capability Centers



NCS-540 FrontHaul

NCS 540 Fronthaul is Cisco's first CPRI capable 5G fronthaul router for network operators to seamlessly integrate 5G architecture options with the existing technology interfaces.



TELECOM

ENGINEERED-IN-INDIA PRODUCT OF THE YEAR

Global Capability Centers

PHILIPS



Affiniti 30

Affiniti 30 is a high-performance and low-cost ultrasound system based on the scalable architecture of high-end ultrasound systems. It is developed for the traditional ultrasound shared service market.

HEALTHCARE

ENGINEERED-IN-INDIA PRODUCT OF THE YEAR

Global Capability Centers



BOSCH

Phantom

Bosch Phantom is an AIoT platform that enables real-time monitoring and management of spaces and assets. It is a non-intrusive, AI at Edge, IoT-based asset monitoring solution that taps into the electrical supply to provide a real-time view on energy consumption, asset health, and productivity.



INDUSTRIAL

ENGINEERED-IN-INDIA PRODUCT OF THE YEAR

Global Capability Centers



PAG1S

Infineon's PAG1S is a single-chip, secondary-side controller targeted towards mobile chargers that integrates a synchronous rectification driver, PD controller, and a wide range of protection circuits. Flexibility and programmability of the secondary-side controller PAG1S paves way for scalable system architecture, enabling customers to develop different power level solutions (18W, 33W, 45W, 65W etc.) with minimal development effort.



SEMICONDUCTOR

ENGINEERED-IN-INDIA PRODUCT OF THE YEAR

Global Capability Centers



SanDisk 1TB microSD Card

SanDisk 1TB microSD card is the world's fastest microSD card with blazing fast read speeds of up to 160MB/s, an A2 application performance, and IPs developed in India. Leader in world retail market, it enables mobiles, AR/VR sets, drones, etc. to store tons of Apps, FHD/4K/8K content, and high-resolution photos.



SEMICONDUCTOR

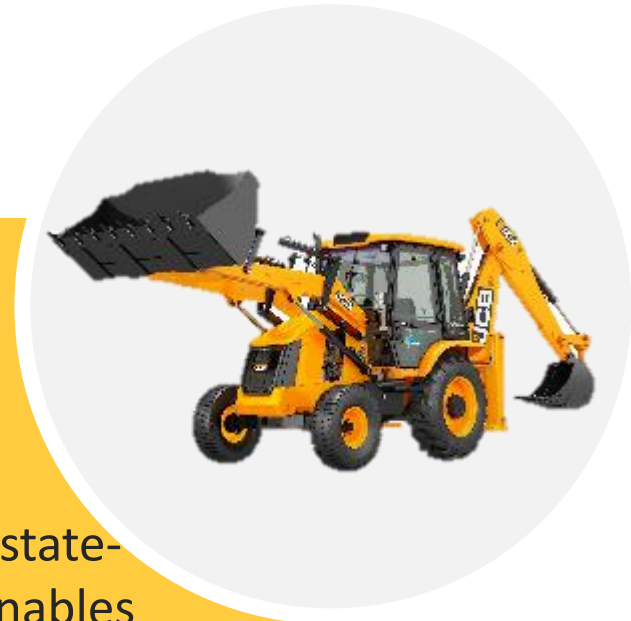
ENGINEERED-IN-INDIA PRODUCT OF THE YEAR

Global Capability Centers



3DX ecoXpert Backhoe Loader

The all new 3DX ecoXpert Backhoe Loader is a state-of-art construction equipment vehicle which enables fuel savings of up to 12 percent, has 22 percent lower maintenance costs and 30 new features. It has JCB's 'Intellipformance' and 'Intellidig' technology for real time machine performance and advanced telematics 'Livelink' for asset and fleet management.



CONSTRUCTION

ENGINEERED-IN-INDIA PRODUCT OF THE YEAR

Global Capability Centers

PHILIPS

Radiology Operations Command Center

Philips Radiology Operations Command Center (ROCC) is a multi-vendor, multi-modality, multi-site virtualized imaging solution that seamlessly connects imaging experts at a command center with technologists at scan locations across their organization.



HEALTHCARE

ENGINEERED-IN-INDIA PRODUCT OF THE YEAR

Global Capability Centers

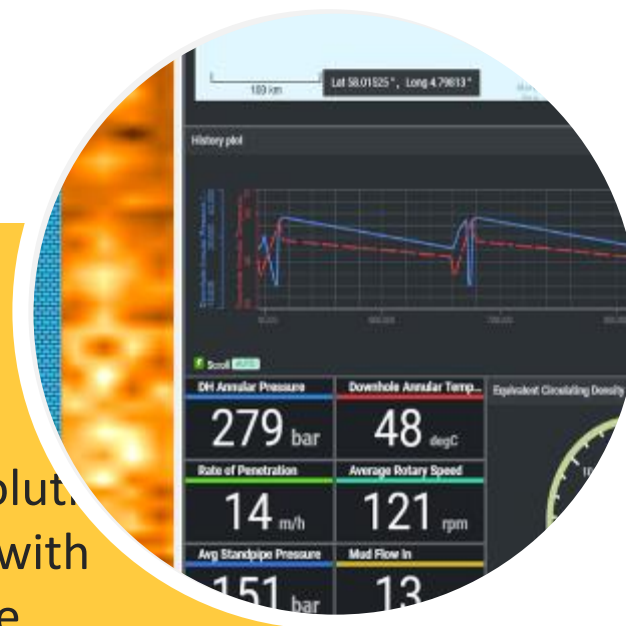


KONGSBERG

SiteCom[®] Discovery Portal

SiteCom[®] Discovery Portal is a digital oilfield solution for real-time monitoring and decision support with lightweight intuitive apps targeted to reimagine solutions for age-old industry challenges with unique solutions for emerging problems.

It facilitates effective remote monitoring to ensure safe and optimized drilling activity while helping operators optimize cost and reduce non-productive time for the Oil & Gas industry.



OIL & GAS

ENGINEERED-IN-INDIA PRODUCT OF THE YEAR

Engineering Service Providers

TATA TECHNOLOGIES

Innovative Solution for Dual PowerTrain Platform

Innovative & cost-effective steel dominant BEV and ICE compatible body structure solution enabling dual powertrain platform/s and supporting multiple vehicle types ranging from compact SUV to large MPV. This can help OEMs rapidly launch new products at a competitive cost without compromising on safety standards.



AUTOMOTIVE

ENGINEERED-IN-INDIA PRODUCT OF THE YEAR

Engineering Service Providers

CYIENT

Software Defined Radio

Software Defined Radio is the first-of-its-kind, completely indigenous tactical communication solution available in man-pack and handheld form for Indian military operations, that helps overcome challenges of modern warfare and aids communication for the on-field soldier. The product deploys in-house algorithm, software, and hardware and ensures complete info-security.



DEFENCE

ENGINEERED-IN-INDIA PRODUCT OF THE YEAR

Engineering Service Providers

TATA ELXSI



QoEtient

QoEtient

QoEtient is a proactive quality-of-experience improvement platform that enables telcos and content owners to improve streaming performance of video contents and to deliver high QoE to end users.

TELECOM



ENGINEERED-IN-INDIA PRODUCT OF THE YEAR

Engineering Service Providers



Radiant Panels

Infosys Radiant Panels are ceiling mounted radiant panels to provide cooling in commercial spaces at 30 percent less energy use and highest indoor air quality.

INDUSTRIAL

ENGINEERED-IN-INDIA PRODUCT OF THE YEAR

Engineering Service Providers



L&T Technology Services

Robotic Endotrainer Kit

An efficient, cost-effective, real-time training system for robot-assisted surgery. The training kit consists of the complete package of a Master Tool Manipulator (MTM), a Patient Side Manipulator (PSM), and a Virtual Reality headset which enables the surgeons to replicate the actual environments during their training sessions. Another USP of the training kit is the in-house developed control algorithm which enables higher accuracy, precision, and repeatability compared to the global peer products.



HEALTHCARE

ENGINEERED-IN-INDIA PRODUCT OF THE YEAR

Engineering Service Providers

CYIENT

Smart Power Distribution Panel

Smart Power Distribution Panel is the first of its kind TRL6 certified product developed completely in-house that allows highly efficient and reliable distribution of primary and secondary power in aircrafts. The product maintains the highest safety standards through smart electrification and makes travel safer and environment friendly.



AEROSPACE

ENGINEERED-IN-INDIA PRODUCT OF THE YEAR

Engineering Service Providers



Telediagnosics Device

The Telediagnosics Device is an innovative handheld medical device kit. The device enables remote patient monitoring and treatment based on accurate medical examination and real-time diagnostics (assisting the healthcare ecosystem amid Covid-19 breakout).



HEALTHCARE

ENGINEERED-IN-INDIA PRODUCT OF THE YEAR

Indian Manufacturing Companies

PHOENIX

Phoenix Medical Systems (P) Ltd.

Numo Ventilator

Numo is a critical care ventilator that provides ventilatory support for patients suffering from chronic respiratory distress. Numo is designed to provide all the essential modes required for treatment and recovery of patients with COVID-19 such as Invasive, Non-Invasive ventilation and High Flow Oxygen Therapy creating a huge impact in the present health care system.



HEALTHCARE

ENGINEERED-IN-INDIA PRODUCT OF THE YEAR

Indian Manufacturing Companies

Visteon®

Seltos Hybrid Instrument Cluster

The 7-inch instrument cluster is a hybrid (analog-digital) instrument cluster developed for Kia Seltos. The cluster displays information in an easy-to-read format; enhances safety by providing information about blind spots and surrounding views; and improves user experience through graphics rendering and applying different themes- including eco, comfort and sport-based on users' visual preferences.



AUTOMOTIVE

ENGINEERED-IN-INDIA PRODUCT OF THE YEAR

Indian Manufacturing Companies

ELECTRA EV



Electric Vehicle Powertrain

Extended Range (213 km) EV Powertrain is a cost-effective, FAME II compliant, and benchmark high-range indigenous electric powertrain built for Tata Tigor EV sedan, targeted at the Indian fleet market.

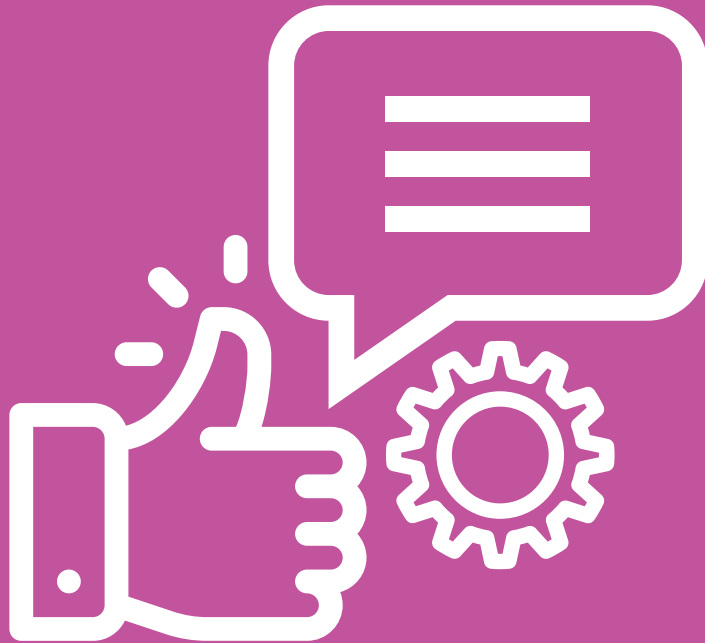
WINNERS

Meet the “Pioneers and Changemakers”

SERVICE DELIVERY EXCELLENCE OF THE YEAR

Recognizing the imagination,
ingenuity and initiative in service
delivery by ER&D Organization

- *Global Capability Centers*
- *Engineering Service Providers*



SERVICE DELIVERY EXCELLENCE OF THE YEAR

Global Capability Centers

PHILIPS

Service Workbench

Service Workbench is a web-based application for remote monitoring of devices, to assist remote services in the corrective maintenance workflow and proactive monitoring to reduce unplanned downtime and improve the first-time right-fix and reduce overall service cost, improving the staff experience and lowering the environmental impact.

HEALTHCARE



SERVICE DELIVERY EXCELLENCE OF THE YEAR

Global Capability Centers



Ascentia[®] Analytics Services

Collins Ascentia[®] Analytics Services – including prognostics and health management (PHM) – gather, filter and analyze aircraft data, and then leverage it to help improve airline operations. With expert guidance, airlines would improve dispatch reliability, reduce unplanned maintenance and optimize maintenance schedules.

AEROSPACE

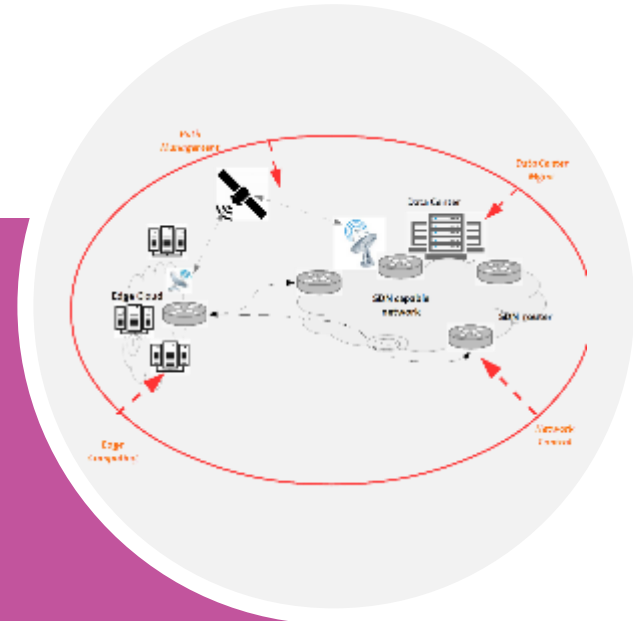
SERVICE DELIVERY EXCELLENCE OF THE YEAR

Global Capability Centers



High Speed Satellite Internet

The India Center of Hughes Systique Corporation helped HUGHES - a global leader in Satellite Broadband Internet, in architecting, building and deploying a SDN/NFV based end to end solution for a satellite backhaul network.



TELECOM

SERVICE DELIVERY EXCELLENCE OF THE YEAR

Engineering Service Providers



Vehicle Top Hats

Tech Mahindra helped a global automotive OEM to develop vehicle top hats for both Indian and International Markets.

AUTOMOTIVE

SERVICE DELIVERY EXCELLENCE OF THE YEAR

Engineering Service Providers



Automotive Infotainment

Software Tier 1 model-based engagement with leading global automotive OEM delivering their next generation Automotive Infotainment system for premium SUV with 50 percent reduction in schedule and additional 40 percent reduction in the cost of development.

AUTOMOTIVE



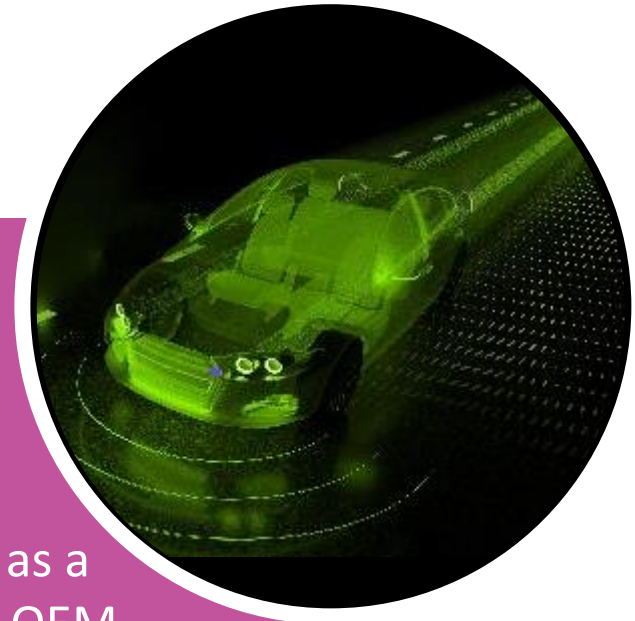
SERVICE DELIVERY EXCELLENCE OF THE YEAR

Engineering Service Providers

KPIT

ADAS and Autonomous Driving (AD) Technology

KPIT demonstrated service delivery excellence as a software technology partner to an automotive OEM for Autonomous Driving. This engagement powered OEM to launch the world's first Level 3 autonomous vehicle. Scale, multiple SW components, and partnerships powered this delivery that will extend up to 2030 on multiple vehicle programs.



AUTOMOTIVE

SERVICE DELIVERY EXCELLENCE OF THE YEAR

Engineering Service Providers



Connected Life Safety Services

For a Fortune 500 industrial products manufacturing company, HARMAN delivered an innovative, all-in-one cloud platform that enables system integrators and facility managers to deliver enhanced fire safety services. This solution helped the client reduce release timeline by up to 30 percent and launch new SaaS offerings in the segment.

INDUSTRIAL



SERVICE DELIVERY EXCELLENCE OF THE YEAR

Engineering Service Providers



RxR Digital Workplace

Infosys partnered with a real estate company to transform their 26 office buildings into smart workplaces, receiving industry recognition for best COVID tech, enabling nearly 2000 tenant businesses and their 125000 employees to safely return to work.



INDUSTRIAL

SERVICE DELIVERY EXCELLENCE OF THE YEAR

Engineering Service Providers

KPIT

Embedded Software Development

KPIT demonstrated service delivery excellence as a software Tier-1 for Charging Control Unit (CCU) program of leading German OEM. The OEM, Tier-1 and KPIT have entered into an agreement to deliver software variants for 11 carlines through an unique menu-based software delivery on demand model, resulting in significant software re-use, and cost benefits.



AUTOMOTIVE

SERVICE DELIVERY EXCELLENCE OF THE YEAR

Engineering Service Providers



Medical Devices Engineering

Capgemini helped an American medical devices manufacturer to introduce new-age connectivity features in its devices meant for cardiac rhythm management, neuromodulation, and electrophysiology faculties, transforming standalone non-connected healthcare systems to a connected care eco-system for patient centric care and reducing healthcare costs.

HEALTHCARE



SERVICE DELIVERY EXCELLENCE OF THE YEAR

Engineering Service Providers

CYIENT

5G Network Engineering

Cyient enabled 5G access for almost 75 percent of Australia's population through Cyient's 'Maximum Coverage with Minimal Infrastructure' network design principle, by extending network access with the fastest data speed to over 450 sites across urban, semi-urban and rural Australia.



TELECOM

SERVICE DELIVERY EXCELLENCE OF THE YEAR

Engineering Service Providers

HCL

Digital IoT Platform for Connected Equipment

HCL helped a global industrial equipment manufacturer conceptualize and develop a digital IoT platform for connected operations. This platform enables new revenue models for the client along with improved profitability, enhanced customer experiences, reduced downtime, and ensuring compliance to regulatory standards.

INDUSTRIAL



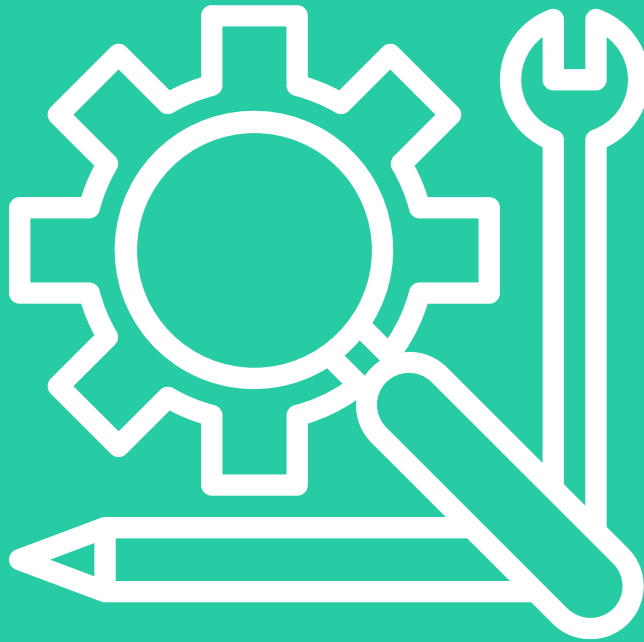
WINNERS

Meet the “Pioneers and Changemakers”

ER&D ORGANIZATION OF THE YEAR

Recognizing ER&D organizations that have enabled innovation, transformation and delivered business impact to their key stakeholders

- *Global Capability Centers*
- *Engineering Service Providers*



ER&D ORGANIZATION OF THE YEAR

Global Capability Centers

SAMSUNG

Samsung R&D Institute India, Bangalore

Samsung R&D India, Bangalore (SRI-B) is the largest overseas R&D center of Samsung Electronics. This center is driving 'research-to-commercialization' for multiple product lines such as smartphones, network and connected home appliances. It aims to create USPs for Samsung's flagship devices through SRI-B CoEs of Wireless Communication, Multimedia, AI, and IoT.

SRI-B is a powerhouse of innovation with 6600+ patents filed globally including India. The center also has active programs for powering Digital India, university collaboration and startup connect to leverage the Indian ecosystem.



ELECTRONICS
CONSUMER

ER&D ORGANIZATION OF THE YEAR

Global Capability Centers



Intel Technology India Pvt. Ltd.

Intel India is Intel's largest design and engineering center outside the US, with state-of-the-art design facilities located in Bengaluru and Hyderabad. Intel has invested over US\$7.25 billion in India to date and continues to expand its R&D and innovation footprint in the country. The India center contributes significantly to Intel's technology and product leadership with its engineering talent engaged in cutting-edge work in the areas of SoC design, 5G networks, graphics, software, and platform for the cloud/data center, client, and IoT markets involving advanced technologies such as AI, 5G, and Autonomous Systems.

SEMICONDUCTOR



ER&D ORGANIZATION OF THE YEAR

Global Capability Centers



Mercedes Benz Research and Development India (MBRDI)

Established in 1996, MBRDI is the largest R&D center for Daimler outside Germany, working seamlessly for all business units of MB cars, vans, Daimler trucks and buses. MBRDI engages close to 10000 professionals who work across design, CAE, embedded E/E, IT, AI, deep learning, cloud, and data analytics competencies, thus driving the digital aspirations of Daimler. MBRDI envisions to be the Centre of Excellence for Daimler in Engineering and IT domain and aims to provide the necessary digital tailwinds to Daimler, as the auto industry evolves into new era of driving and customer experience.

ER&D ORGANIZATION OF THE YEAR

Global Capability Centers

PHILIPS

Philips Innovation Campus, Bengaluru

Established in 1996, the Philips Innovation Campus, Bengaluru is a key component of Philips' R&D business function. The India Innovation Center is the base for end-to-end development and management of multiple product lines such as ultrasound, MRI, and personal health among others. The purpose of the center is to improve people's health and well-being through meaningful innovation.



HEALTHCARE

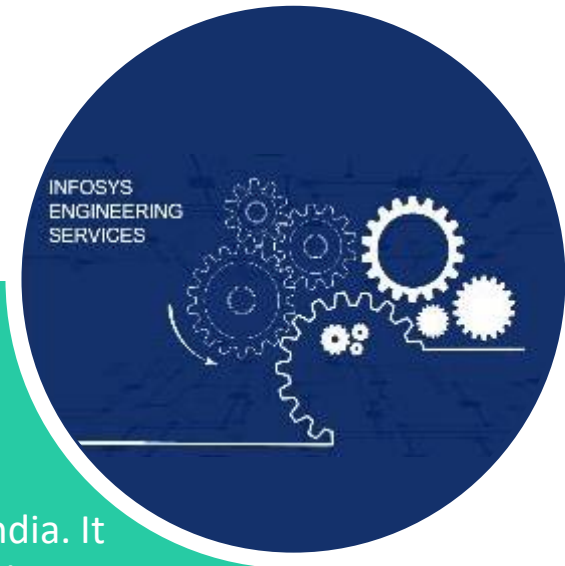
ER&D ORGANIZATION OF THE YEAR

Engineering Service Providers



Infosys Engineering Services

Infosys is one of the leading engineering services providers in India. It helps global enterprises across industry verticals respond to real-time customer needs and build competitive product and technology offerings. As a strategic product development partner for enterprises across the globe, Infosys has successfully delivered numerous end-to-end turnkey products. Its service transformation initiatives have helped enterprises reduce their operations costs, improve efficiency, and reduce time to market for products. Infosys has strong CoEs and Living Labs enabling innovation at scale with many global patents granted. It has a rich ER&D ecosystem partnership with an innovation fund, a network of startups, and academic partnerships, to deliver top-notch value to customers.



ER&D ORGANIZATION OF THE YEAR

Engineering Service Providers



Wipro Engineering

Wipro is one of the leading technology services providers and trusted advisors to global 1000 enterprises. Wipro's excellent understanding of customer needs and market trends has helped it undertake turnkey development of over 40 products over the last 3 years. Wipro has undertaken multiple innovative projects for the customers which have resulted in over 400 patents filed globally in the past 3 years. It's next-gen service delivery initiatives such as Topcoder, Automation, Holmes, Tarang etc. have helped the customer reduce their time to market, product development costs, and development efforts. With more than 25 CoEs, it has over 32000 ER&D resources, 13000+ of which are skilled in the next-gen technologies of the future.



ER&D ORGANIZATION OF THE YEAR

Engineering Service Providers

HCL

HCL Engineering and R&D Services

HCL Technologies (HCL) empowers global enterprises with technology for the next decade, today. HCL's Mode 1-2-3 strategy, based on its deep-domain industry expertise, customer-centricity and entrepreneurial culture of Ideapreneurship™, enables businesses to transform into next-gen enterprises. HCL's Engineering and R&D Services (ERS) business provides product engineering, platform engineering and operational technology services to its global clients. It accelerates product development for its customers by leveraging the latest technologies, monetizing product services, and providing immersive end-user experiences. With over four decades of engineering heritage, HCL ERS has emerged as one of the largest digital engineering service providers from India.



WINNERS

Meet the “Pioneers and Changemakers”

SOCIAL IMPACT SOLUTION OF THE YEAR

Recognizing revolutionary products and solutions which have been consequential in addressing the critical challenges facing our society and building a sustainable world

- *Global Capability Centers*
- *Engineering Service Providers*



SOCIAL IMPACT SOLUTION OF THE YEAR

Global Capability Centers

SAMSUNG

Eye Health Diagnostic Suite

Eye Health Diagnostic Suite is an AI-powered affordable and portable smartphone-based solution. It leverages previous-generation smartphones under Samsung Galaxy Upcycling program. The solution detects eye ailment early-on and prevents blindness in low-medium-income countries. EyeLike is deployed in India through Aravind Eye Hospital, and also in Vietnam, Morocco, Papua New Guinea.



HEALTHCARE

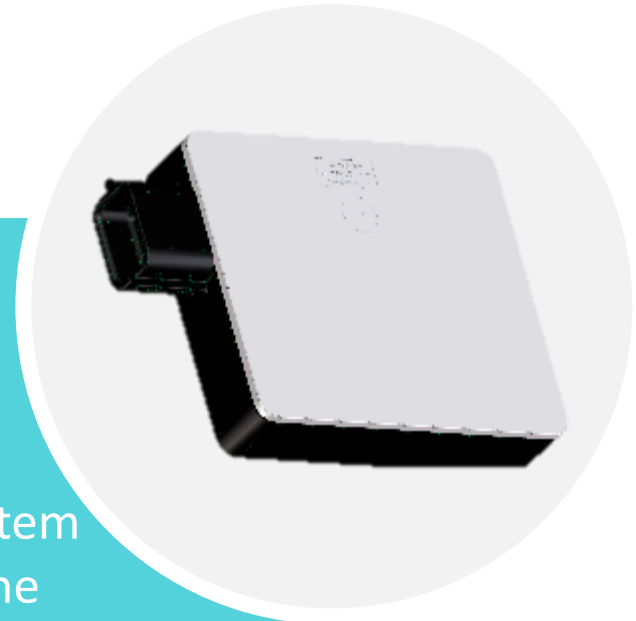
SOCIAL IMPACT SOLUTION OF THE YEAR

Global Capability Centers

veoneer

Interior Cabin Sensor

Interior Cabin Sensor (ICS) is a radar-based system designed and developed in India. It classifies the occupants (adult/child) and warns users when they leave a child behind in their vehicles. This avoids heatstroke and death of children. A major North American car manufacturer has identified Veoneer as a development partner for ICS.



AUTOMOTIVE

WINNER

SOCIAL IMPACT SOLUTION OF THE YEAR

Engineering Service Providers



AccuAlertMe

HARMAN's AccuAlertMe is an enterprise grade secure contact tracing, and social distancing enablement platform. It offers enterprises a comprehensive solution to enable safe return to work.



HEALTHCARE

SOCIAL IMPACT SOLUTION OF THE YEAR

Engineering Service Providers

CYIENT

TrueNAT RTPCR Solution

Cyient developed the TrueNAT solution that revolutionized healthcare by creating a first-of-its-kind portable RTPCR testing kit that allowed timely testing of Covid-19 for millions globally at the peak of the pandemic. TrueNAT is a chip-based point of care multi-disease platform with over 25 tests and globally used for the detection and diagnosis of Covid 19.



HEALTHCARE

SOCIAL IMPACT SOLUTION OF THE YEAR

Engineering Service Providers

TATA ELXSI

Gazelle

Gazelle, a point-of-care diagnostic platform, is a portable and easy-to-use diagnostic device for malaria and sickle-cell anemia screening. The integrated platform provides affordable, accurate, and life-changing medical diagnostics for under-served people everywhere. Gazelle places the power of a high-end laboratory into remote healthcare settings.



HEALTHCARE

WINNER

SOCIAL IMPACT SOLUTION OF THE YEAR

Engineering Service Providers



Clever Energy™

Clever Energy™ is an enterprise-level energy and emission management system. It facilitates organizations to achieve carbon-neutral goals by reducing carbon emissions.



tcs CleverEnergy™

ENERGY

A network diagram consisting of numerous grey dots connected by thin grey lines, forming a complex web-like structure. The dots vary in size and are distributed across the bottom right portion of the slide.

SOCIAL IMPACT SOLUTION OF THE YEAR

Engineering Service Providers



Automated Blood Collection System

A leading blood management devices company partnered with Capgemini to accelerate the launch of automated blood collection and apheresis systems to enable convalescent plasma therapy for treating COVID-19 patients.

HEALTHCARE



SOCIAL IMPACT SOLUTION OF THE YEAR

Engineering Service Providers



Assisto

Assisto is an affordable intelligent device which assists differently-abled people in vocal communication. It can be worn on any moving part of the body, uses sophisticated AI algorithms to synthesize and convert sensory inputs to near natural voice of the person in native language.



HEALTHCARE

WINNERS

Meet the “Pioneers and Changemakers”

WOMAN ROLE-MODEL IN ER&D

Recognizing woman in positions of technical leadership who serve as a role-model not just for their organization but also for the entire ER&D ecosystem

- *Global Capability Centers*
- *Engineering Service Providers*




WOMAN ROLE-MODEL IN ER&D

Global Capability Centers

PHILIPS

Dr. Pallavi Vajinepalli

Principal Scientist and Group Leader



With a Ph.D. in Computer Science and Engineering from IIT Kharagpur, Pallavi Vajinepalli is Principal Scientist and Group Leader at Philips. Her main responsibilities include initiating and driving innovation roadmaps, and industrial research in the domain of ultrasound to enable meaningful innovations. She has worked on developing multiple medical device solutions such as automated colposcopy, automated 2D fetal biometry, and follicle counting. On the innovation front, she has filed 35 international patents with around 18 patents granted and published over 20 research articles.

WOMAN ROLE-MODEL IN ER&D

Global Capability Centers



Rupa Kamoji

Director R&D

With 20+ years of experience working on CADNAV products, Rupa Kamoji is the Director of R&D at Synopsys. Her responsibilities include driving the product's life cycle management and planning SRM releases in coordination with the cross-functional core team. She also collaborates closely with the sales team to drive business growth. On innovation front, Rupa has contributed to four international patents and published six international articles.

WOMAN ROLE-MODEL IN ER&D

Global Capability Centers



DELLTechnologies

Kala Sampathkumar

Director

With 25+ years of industry experience, Kala Sampathkumar is the Director at Dell Technologies leading a team of over 80 members. Her responsibilities include - delivering critical projects that drive innovation, quality, productivity, and efficiency across the organization. She is passionate about bringing new and disruptive technologies to market. Her passion led her to become an innovator with 13 authorized patents and one of her patents was chosen by Dell as the top 3 inventions in India.

WOMAN ROLE-MODEL IN ER&D

Global Capability Centers



Dr. Deepika Sachdeva

Customer Support Manager and
Technology Leader APAC

Dr. Deepika Sachdeva is one of the leading experts in Materials and Metallurgy at GE India. Deepika joined GE as a Scientist in the Materials Research team in 2014 and over the span of 4 years, was the leading GE Aviation's Materials Engineering and Advanced Services Technologies Team in India. She has been recently inducted into GE's prestigious Accelerated Leadership Program. Under this program, she is supporting regional customers and leading the deployment of advanced technologies for improved performance and operations in GE Aviation's Customer and Product Support organization. On innovation front, Deepika has filed six Indian and International patents, published eight journal articles, and 12 conference proceedings.

WOMAN ROLE-MODEL IN ER&D

Engineering Service Providers



Sindhu Ramachandran S

Principal Architect

As the Principal Architect in QuEST Global, Sindhu Ramachandran leads the AI CoE focusing on Computer Vision in the Software and Digital service line. Her primary responsibility is to provide the best AI solutions using machine learning and deep learning to customers and end-users. She has been instrumental in setting up competency framework, certifications, and defining best practices for AI and Analytics in the organization. She also drives an 'innovative culture' by implementing QuEST's solutions in partner hardware and software and setting up CoEs and labs for partners in QuEST premises.

WOMAN ROLE-MODEL IN ER&D

Engineering Service Providers



Saraswati Thippaiah

Principal, Advanced Engineering

Recognized as domain champion, Saraswati Thippaiah is a rising star in the automation field. As the Principal of Advanced Engineering in Infosys, she is responsible for emerging technology incubation, automation strategy definition, architecture design team and stakeholder management, and new business development. She has worked on multiple technical projects in robotics automation. On innovation front, Saraswati has filed four patents and published two research articles.

WOMAN ROLE-MODEL IN ER&D

Engineering Service Providers



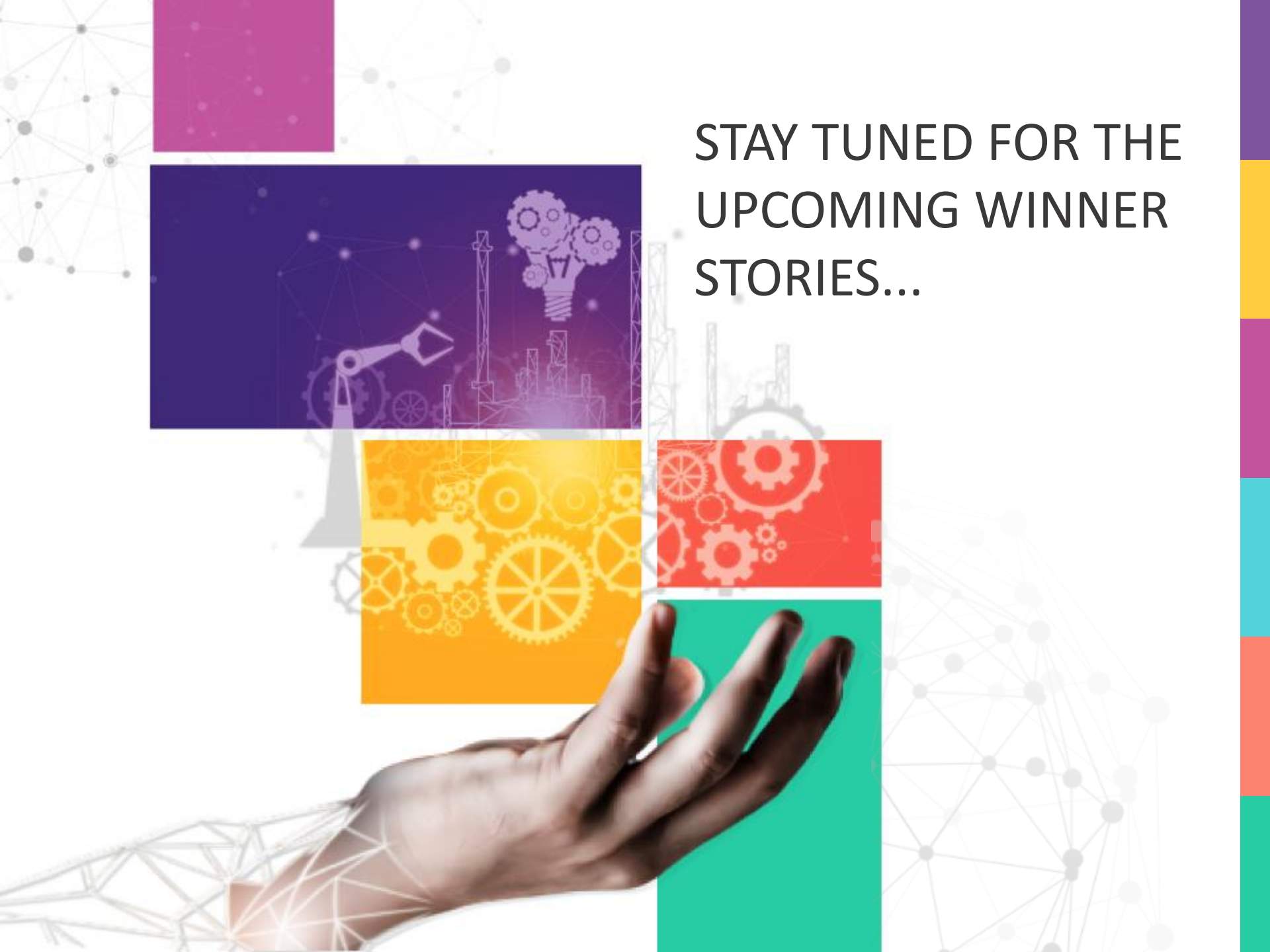
GlobalLogic

Ashwani Nandini

India Head, Delivery and Digital Assurance

In her current role as India Head, Delivery and Digital Assurance at GlobalLogic, Ashwani Nandini is responsible for predictable delivery at scale thus ensuring customer delight and industry leading NPS. She has set up several nimble, globally recognized frameworks to enable delivery and digital assurance. She was recognized as the Global Capability Champion 2018 for "Predictable Measurement Framework for Agile" in the Capability Championship 2018 by SEI. In her previous role as Noida Delivery Head, she was instrumental in establishing Noida as the largest engineering center globally for delivering complex digital transformation engagements, setting up large Product Engineering Labs known for innovation at scale. She set up the India Design Studio that enabled India to deliver design-led engineering engagements. She has authored several articles that have been published in leading publications and has been an eminent speaker at several conferences.

STAY TUNED FOR THE
UPCOMING WINNER
STORIES...



NASSCOM Congratulates all the Winners

Think ER&D, Think India

 www.nasscom.in

 delhi@nasscom.in

 +91-120-4990111

NASSCOM[®]
community

www.community.nasscom.in

 [/NASSCOMOfficial](https://www.facebook.com/NASSCOMOfficial)

 [/nasscom](https://twitter.com/nasscom)

 [/NasscomVideos](https://www.youtube.com/NasscomVideos)



NASSCOM Plot 7 to 10, Sector 126, Noida - 201303